



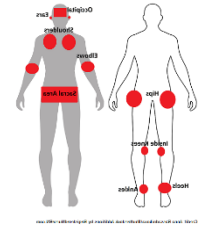
## FOCUS POINT NEWSLETTER - 1/18/2021

### SNF Quality Reporting Program

#### NEW TRAINING EVENTS

**Section M: Skin Conditions - Assessment and Coding of Pressure Ulcers/Injuries Web-Based Training - Available January 13, 2021 – Click [here](#) for link.** The Centers for Medicare & Medicaid Services (CMS) is offering a web-based

training course that provides an overview of the assessment and coding of pressure ulcers/injuries. This 90-minute course is intended for providers in Home Health Agencies (HHAs), Inpatient Rehabilitation Facilities (IRFs), Long-Term Care Hospitals (LTCHs), and Skilled Nursing Facilities (SNFs), and is designed to be used on demand anywhere you can access a browser. [Please click HERE to access the web-based training.](#)



#### From Data Elements to Quality Measures – Cross-Setting QRP Web-Based Training

The Centers for Medicare & Medicaid Services (CMS) is offering a web-based training course that provides a high-level overview of how data elements within CMS patient/resident assessment instruments are used to construct quality measures (QMs) across post-acute care (PAC) settings. The PAC settings included are those covered under the Centers for Medicare & Medicaid Services (CMS) Quality Reporting Programs (QRPs) for Home Health Agencies (HHAs), Inpatient Rehabilitation Facilities (IRFs), Long-Term Care Hospitals (LTCHs) and Skilled Nursing Facilities (SNFs). Information covered will include a short review of the QRPs' cross-setting quality measures (QM), how data elements feed into these cross-setting QMs, how QMs are calculated and appear on QM reports and how to access and use this data for quality improvement. [Please click HERE to access the web-based training.](#)



#### Coadministration of COVID Vaccine with Other Vaccines – click [here](#)

Given the lack of data on the safety and efficacy of mRNA COVID-19 vaccines administered simultaneously with other vaccines, **the vaccine series should routinely be administered alone, with a minimum interval of 14 days before or after administration with any other vaccine.** However, mRNA COVID-19 and other vaccines may be administered within a shorter period in situations where the benefits of vaccination are deemed to outweigh the potential unknown risks of vaccine coadministration (e.g., tetanus toxoid-containing vaccination as part of wound management, measles or hepatitis A vaccination during an outbreak) or to avoid barriers or delays to mRNA COVID-19 vaccination (e.g., in long-term care facility residents or healthcare personnel who received influenza or other vaccinations prior to/upon admission or onboarding). If mRNA COVID-19 vaccines are administered within 14 days of another vaccine, doses do not need to be repeated for either vaccine.

#### Ready to Certify Your MDS 3.0 Knowledge?



**RAC-CT Certification Virtual Workshop - 4 days.**

**Feb 9-12, 2021. 12-6pm Eastern Time**

**Apr 6-9, 2021. 12-6pm Eastern Time**

The Resident Assessment Coordinator—Certified (RAC-CT) education and certification program has long set the national standard for skilled nursing facility PPS and MDS 3.0 education. Constantly reviewed and updated by a team of experts, the RAC-CT program ensures your knowledge of clinical assessment and care planning, completion of the MDS, and the regulatory body surrounding the RAI/MDS process.

- Navigate tough coding dilemmas with the most current coding and regulatory knowledge
- Recover reimbursement and avoid overpayment by knowing where to find important MDS data
- Proactively solve quality pitfalls by recognizing the clues reflected in your Quality-Measure and Five Star reports

- Uncover unique solutions that honor resident preference by synthesizing MDS, CAA, and care plan data into individualized interventions
- Earn respect in your facility by proving that you are dedicated, capable, and knowledgeable
- Gain confidence that will enable you to take a leadership role in resident care

Having the RAC-CT credential behind your name shows you are a knowledgeable and capable MDS professional. RAC-CT certification is the nationally recognized gold-standard in resident assessment in the long-term care nursing profession. By earning this credential, individuals have shown their expertise in skilled nursing facility prospective payment system and minimum data set (MDS 3.0) assessment.

Courses Include:

- MDS Coding for OBRA and PPS, parts 1 and 2
- OBRA Timing and Scheduling
- Care Area Assessments
- Introduction to Medicare Part A
- Care Planning
- Accurately Assessing Functional Status
- Five-Star Quality Rating System
- Quality Measures
- Managing PDPM in the SNF

[For More Course Information](#)

### Workshop Information

This is an online class, Offered by [Judy Wilhide MDS Consulting](#). You will receive logon instructions prior to the class. This class on completion qualifies for 22.5 CEU's.

Class #1 - February 9-12, 2021. 4 days, 6hrs/day, 12noon - 6pm Eastern time.

Class #2 - April 6-9, 2021. 4 days, 6hrs/day, 12noon - 6pm Eastern time.

This workshop will be held virtually, through the GoToWebinar platform.

Handouts are provided electronically

Your workshop registration includes access to the 10 RAC-CT certification exams. To earn the credential, you must pass the final exams with a score of 80% or higher. You will have 90 days from the date the exams are launched before they expire.

Online registration will close 5 days prior to the start of the workshop. Payment must be received before the workshop begins in order to attend.

[Click to register for February 9-12 class](#)

[Click to register for April 6-9 class](#)

**Being a Better Leader** - Occupying a leadership position is not the same as being a good leader. Leadership requires one being able to connect, motivate, and inspire others to carry out common goals and objectives. Growing in your ability to be a good leader requires self-reflection to see how you think and act, and how your behavior affects others. Leading well requires continuous self-development and feedback. By embarking on the journey, you will see greater employee commitment and accountability within your team.

This leadership journey begins by:

1. Clearly identify the problem you would like to solve or achieve
2. Articulate why it is important to you and the organization
3. Identify ways your team can support the efforts and grow
4. Identify measures of success
5. Seek feedback and review progress

